

MUNICIPALITY OF MONROEVILLE  
ALLEGHENY COUNTY, PENNSYLVANIA

ORDINANCE NO. 2312

AN ORDINANCE OF THE MUNICIPALITY OF MONROEVILLE ACCEPTING  
BLUE GRASS CIRCLE

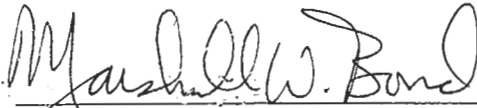
NOW, THEREFORE, BE IT ORDAINED AND ENACTED by the Council of the Municipality of Monroeville, County of Allegheny, Commonwealth of Pennsylvania and it is hereby ordained and enacted by the authority of the same as follows:

SECTION 1. The Municipality of Monroeville hereby accepts the dedication of Blue Grass Circle in the Lexington Hills Plan of Lots and a total distance of 0.32 miles as more particularly described on Exhibit "A" attached hereto.


SECTION 2. All Ordinances or Resolutions or parts of Ordinances or Resolutions in conflict herewith are hereby repealed.

ORDAINED AND ENACTED into law the 9<sup>th</sup> day of November, 2004.

MUNICIPALITY OF MONROEVILLE



Marshall W. Bond  
Municipal Manager



James J. Lomeo  
Mayor

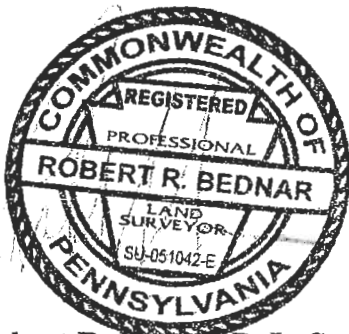
**Lexington Hills Plan of Lots  
Blue Grass Circle  
50' Right-of-Way**

Beginning at a point on the northerly line of Stroschein Road, 33 feet wide and the Westerly line of Blue Grass Circle, 50' wide, said point being a distant 44.55' S 40° 21' 34" W from the Southwesterly corner of the Revised Lexington Hills Plan of Lots, recorded in the Recorder of Deeds Office, Allegheny County, Pennsylvania, in Plan Book Volume 646, Pages 107 to 110 and is the true place of beginning; thence along the Northerly line of Stroschein Road and across aforesaid 50' Blue Grass Circle N 40° 21' 34" E a distance of 51.52' to a point said point being the Northerly line of Stroschein Road and the Easterly line of Blue Grass Circle; thence along the outside perimeter of Blue Grass Circle, 50' wide, the following courses and distances: N 35° 42' 50" W a distance of 638.95' along the land of Parcel C, Lot 8, Lot 7 and part of Parcel D to a Point of Curvature; thence by an arc curving to the left having a radius of 120.00' and an arc distance of 336.47' along the land of part of Parcel D, Lot 6 and part of Lot 5 to a Point of Tangency; thence along the land of part of Lot 5, Lot 4 and part of Lot 3 S 16° 21' 57" E a distance of 366.49' to a point of Curvature, said point being the outer perimeter of Blue Grass Circle and the departure point for describing the inside perimeter of Blue Grass Circle; thence across said Blue Grass Circle N 73° 38' 03" E a distance of 50.00' to a point, said point being the point of tangency and the beginning point for describing the inside perimeter of Blue Grass Circle the following 8 courses and distances: N 16° 21' 57" W a distance of 366.49' to a point of curvature; thence by an arc curving to the right with a radius of 70.00' and an arc length of 196.27' to a point of tangency; thence S 35° 42' 50" E a distance of 313.13' to a point of curvature; thence by an arc curving to the right with a radius of 25.00' and an arc length of 39.27' to a point of tangency; thence S 54° 17' 10" W a distance of 19.65' to a point of curvature; thence by an arc curving to the left with a radius of 325.00' and an arc length of 50.11' to a point; thence S 45° 27' 10" W a distance of 131.56' to a point of curvature; thence by an arc curving to the right with a radius of 30.00' and an arc length of 61.88' to a point said point being the beginning point for describing the inside perimeter of Blue Grass Circle, 50' wide. Thence across Blue Grass Circle on the same line previously described S 73° 38' 03" W a distance of 50.00' to a point said point being on the outer perimeter of Blue Grass Circle and the departure point for describing the inside perimeter of Blue Grass Circle; thence continuing along the outside perimeter the following courses and distances: by an arc curving to the left with a radius of 80.00' and an arc length of 165.01' and a chord bearing of O 00° 00' 00" O a distance of 000.00' along the land of part of Lot 3, Parcel B and part of Lot 2 to a point; thence N 45° 27' 10" E a distance of 131.56 along land of part of Lot 2 and part

of Lot 1 to a point; thence by an arc curving to the right with a radius of 275.00' and an arc length of 42.40' along the land of Lot 1 to a point; thence N 54°17'10" E a distance of 19.65' continuing along Lot 1 to a point; thence by an arc curving to the right with a radius of 25.00' and an arc length of 39.27' to a point; thence continuing along the land of Lot 1 and Common Area S 35°42'50" E a distance of 238.22' to a point the true point of beginning.

Containing 1.86 Acres.

This description was prepared from the Revised Lexington Hills Plan of Lots prepared by R. F. Mital & Associates and recorded in the Allegheny County Recorder of Deeds Office in Plan Book Volume 646, Pages 107 to 110.

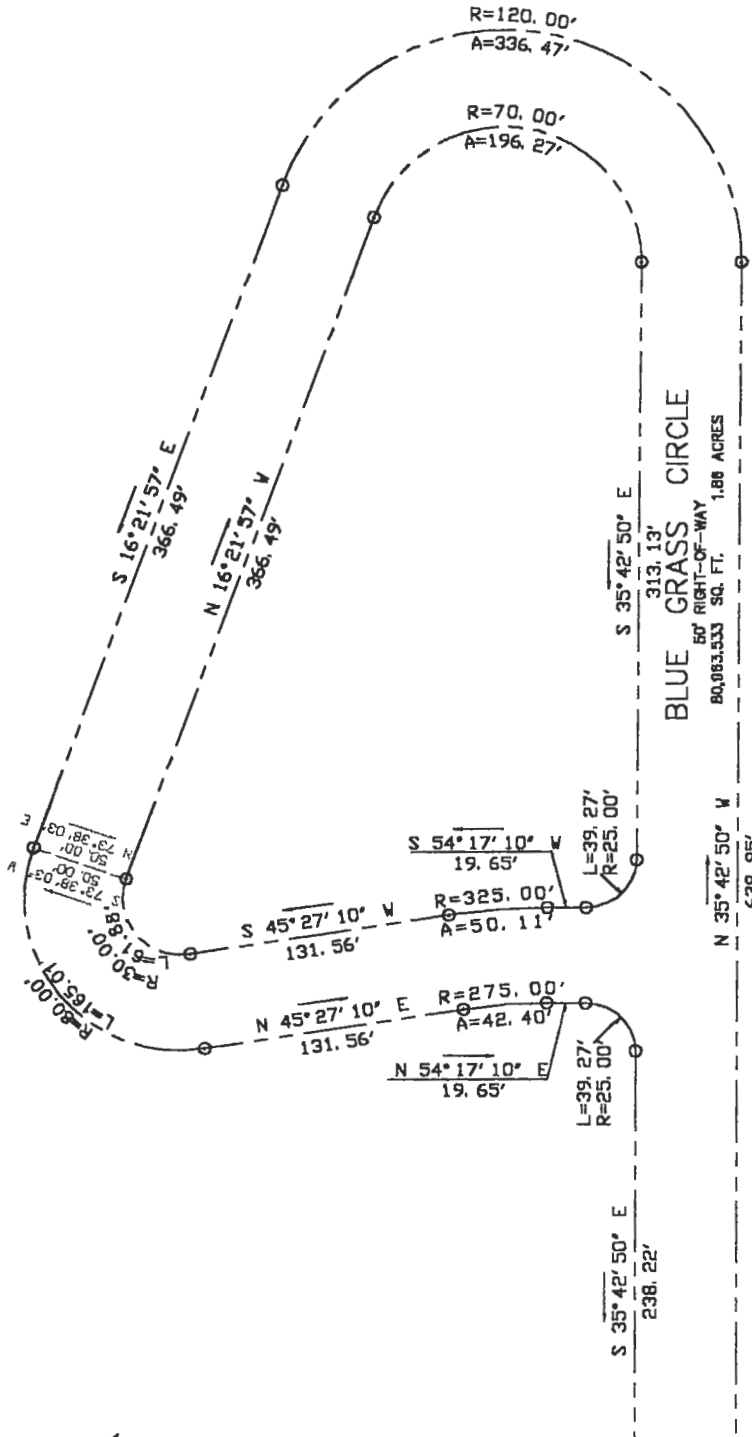


Robert R. Bednar P. L. S.  
SU-051042-E  
The Meritage Group L. P.



STROSCHER ROAD  
35' RIGHT-OF-WAY

S 40° 21' 34" W 51.52'  
64.55' N 40° 21' 34" E



Robert R. Bednar P. L. S.  
SU-051042-E

Note:  
This drawing was prepared from the Revised Lexington Hills Plan of Lots Prepared by R. Mitall & Associates and recorded in the Allegheny County Recorder of Deeds Office in Plan Book Volume 848, Pages 107 to 110.

Revisions	Sheet No. 1 of 1
	Drawing No. MG00001
	DRAWN: RRB
	CHECKED: RRB

DATE: 10/29/2004  
SCALE: 1" = 100'

Plan of Right-of-Way  
for  
Blue Grass Circle  
Revised Lexington Hills  
Plan of Lots  
MUNICIPALITY OF MONROEVILLE, ALLEGHENY CO., PENNSYLVANIA

The Meritage Group L.P.  
772 Fine Valley Drive  
Pittsburgh, PA 15238  
Phone: 724-327-5755  
Fax: 724-733-0189

