

MUNICIPALITY OF MONROEVILLE
ALLEGHENY COUNTY, PENNSYLVANIA

ORDINANCE NO. 2254

**AN ORDINANCE OF THE MUNICIPALITY OF MONROEVILLE
ACCEPTING HILLCREST COURT**

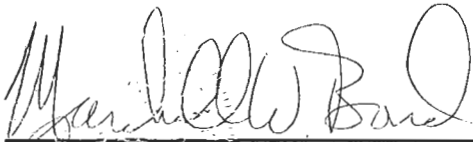
NOW, THEREFORE, BE IT ORDAINED AND ENACTED by the Council of the Municipality of Monroeville, County of Allegheny, Commonwealth of Pennsylvania, and it is hereby ordained and enacted by the authority of the same as follows:

Section 1. The Municipality of Monroeville hereby accepts the dedication of Hillcrest Court in the Tilbrook Estates Plan of Lots and a total distance of 0.10 miles as more particularly described on Exhibit "A" attached hereto.

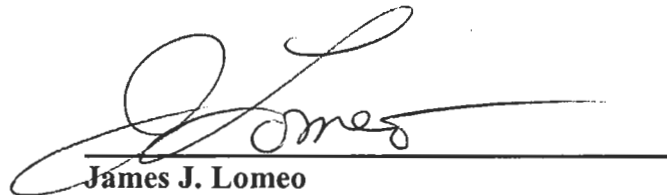
Section 2. All Ordinances or Resolutions or parts of Ordinances or Resolutions in conflict herewith are hereby repealed.

ORDAINED AND ENACTED into law the 11TH day of March, 2003.

MUNICIPALITY OF MONROEVILLE



Marshall W. Bond
Municipal Manager



James J. Lomeo
Mayor

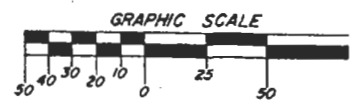
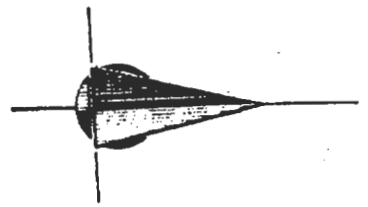
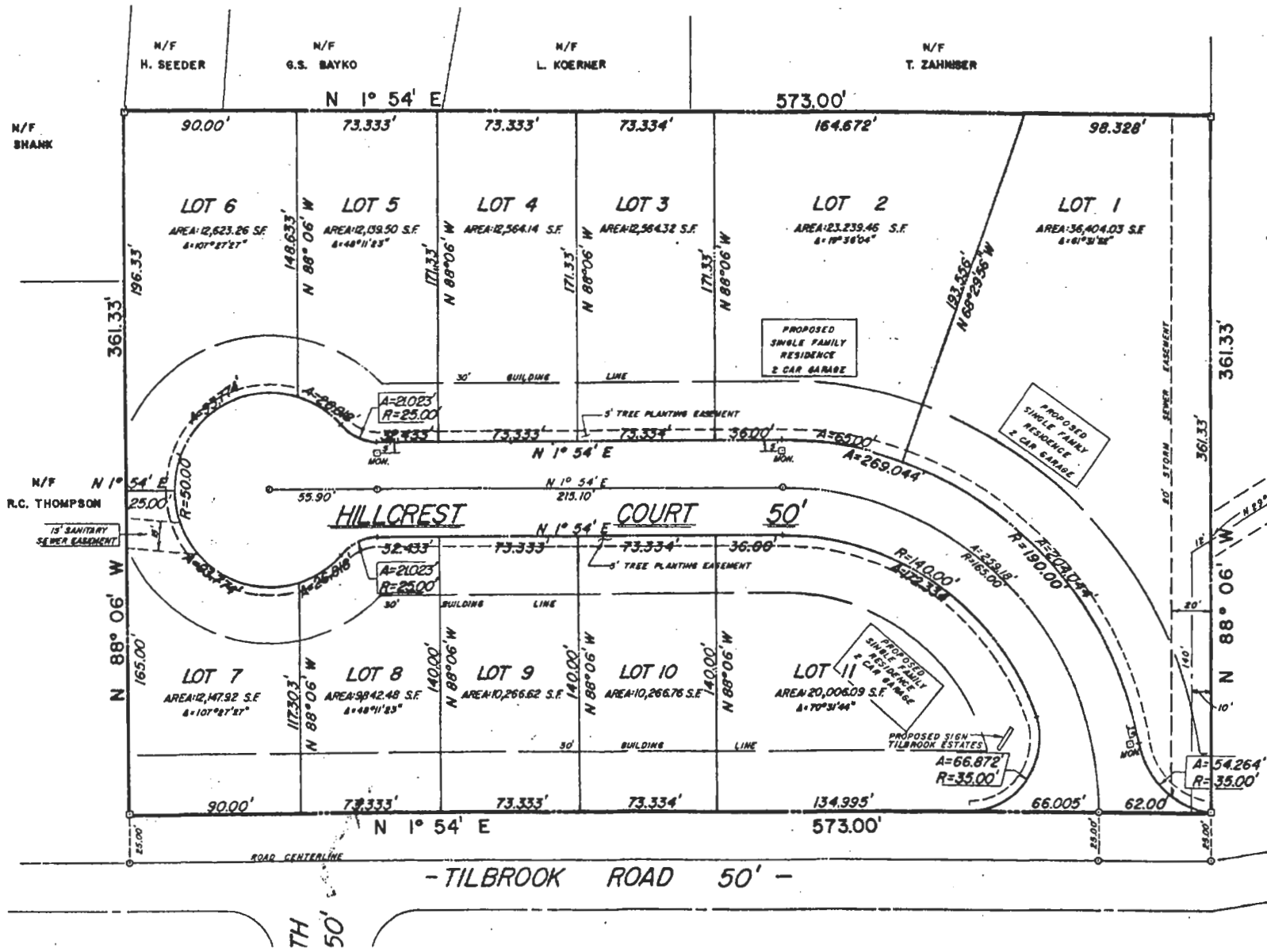
ENTERED INTO A LEGAL BOOK ON: March 21, 2003

**HILLCREST COURT
STREET ACCEPTANCE
LAND DESCRIPTION
EXHIBIT "A"**

The Municipality of Monroeville hereby accepts the dedication of Hillcrest Court as shown and laid out in Tilbrook Estates Plan of Lots, more fully described as follows:

FROM A POINT OF BEGINNING at the northeast corner of Lot 1 in the aforementioned Tilbrook Estate Plan of lots, thence to a point curving to the right at a radius of 35.00 feet and an arc length of 54.264 feet, thence to a point curving to the left at a radius of 190.00 feet and an arc length of 269.044 feet, thence south 1° 54' west a distance of 215.10 feet, thence to a point curving to the right at a radius of 25.00 feet and an arc length of 21.023 feet, thence to a point curving to the left at a radius of 50.00 feet and an arc length of 241.184 feet, thence to a point curving to the right at a radius of 25.00 feet and an arc length of 21.023 feet, thence north 1° 54' east a distance of 215.20 feet, thence to a point curving to the right at a radius of 140.00 feet and an arc length of 172.334 feet, thence to a point curving to the right at a radius of 35.00 feet and an arc length of 66.872 feet, thence north 1° 54' east a distance of 128.005 feet to the place of beginning.

The Municipality of Monroeville hereby accepts for municipal purposes all of the storm water servicing the lots adjacent to the streets herein above described and located within the said street right-of-way or adjacent lots together with any easement and additional right-of-way therefore shown on said plan, to be part of the storm water sewer systems of the Municipality of Monroeville. The grades for the streets accepted hereunder are hereby established as the existing grades, reserving however the Municipality of Monroeville the right to change such grades without liability to adjacent property or property owners thereof.



IN WITNESS V