

MUNICIPALITY OF MONROEVILLE
ALLEGHENY COUNTY, PENNSYLVANIA

ORDINANCE NO. 2162

AN ORDINANCE OF THE MUNICIPALITY OF MONROEVILLE
ACCEPTING CARRINGTON COURT

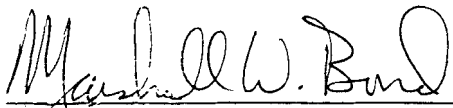
NOW, THEREFORE, BE IT ORDAINED AND ENACTED by the Council of the Municipality of Monroeville, County of Allegheny, Commonwealth of Pennsylvania, and it is hereby ordained and enacted by the authority of the same as follows:

Section 1. The Municipality of Monroeville hereby accepts the dedication of Carrington Court in the Walker Evergreen Plan No. 2 of Lots and a total distance of 0.07 miles as more particularly described on Exhibit "A" attached hereto.

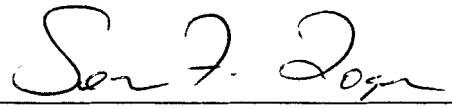
Section 2. All Ordinances or Resolutions or parts of Ordinances or Resolutions in conflict herewith are hereby repealed.

ORDAINED AND ENACTED into law the 14th day of November, 2000.

MUNICIPALITY OF MONROEVILLE



Marshall W. Bond
Municipal Manager



Sean F. Logan
Mayor

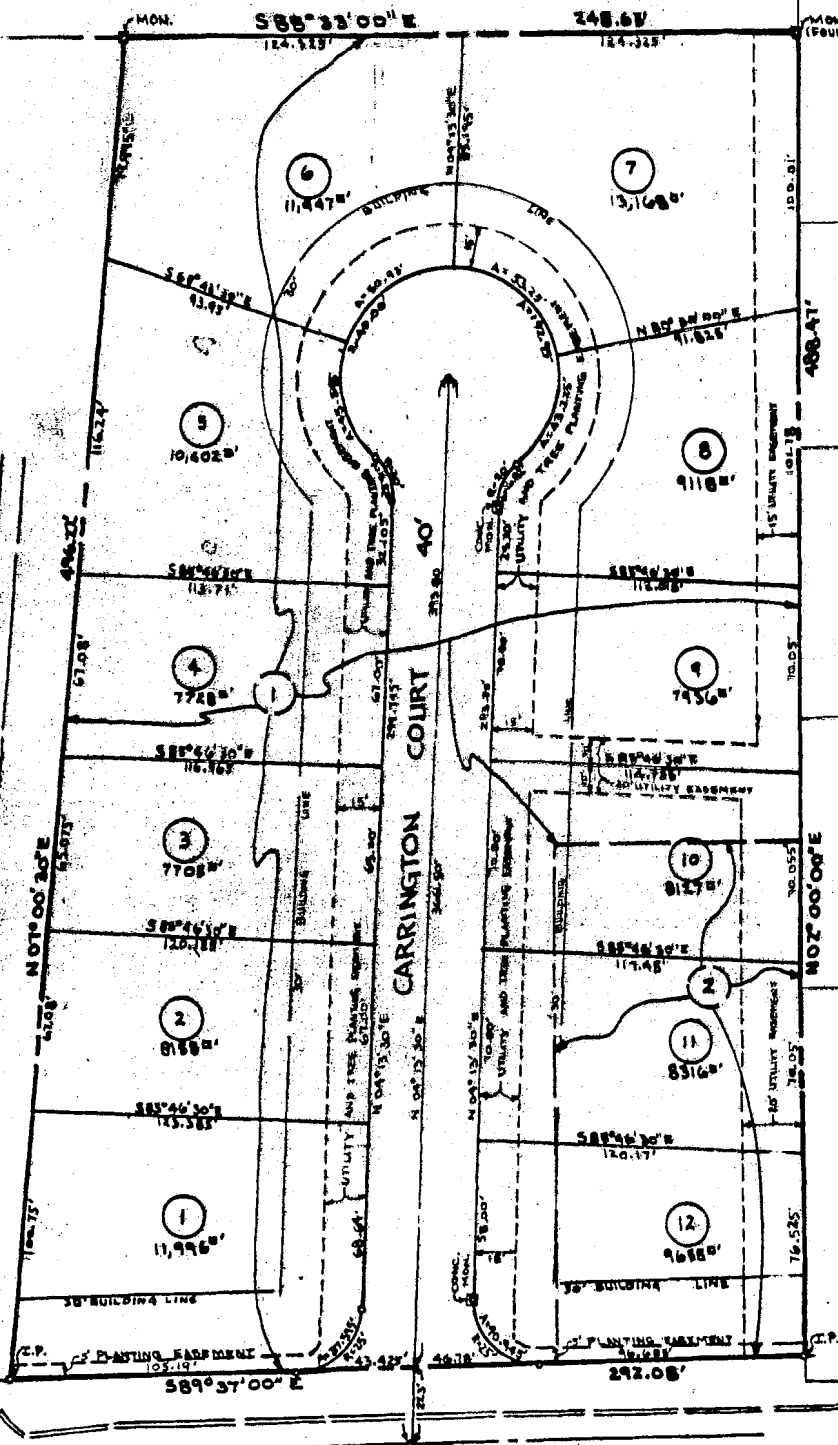
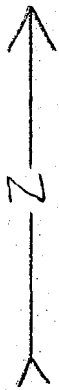
ENTERED INTO A LEGAL BOOK ON: November 24, 2000.

**CARRINGTON COURT
STREET ACCEPTANCE
LAND DESCRIPTION
EXHIBIT "A"**

The Municipality of Monroeville hereby accepts the dedication of Carrington Court as shown and laid out in Walker Evergreen Plan No. 2 of Lots, more fully described as follows:

FROM A POINT OF BEGINNING at the northwest corner of Lot 1 in the aforementioned Walker Evergreen Plan No. 2 of lots, thence south $89^{\circ} 37'00''$ east along Evergreen Drive a distance of 105.19 feet to the true place of beginning, thence to a point curving to the right at a radius of 25.00 feet and an arc length of 37.595 feet, thence north $04^{\circ} 13'30''$ east a distance of 299.745 feet, thence to a point curving to the left at a radius of 20.00 feet and an arc length of 16.82 feet, thence by the arc of a circle curving to the right, having a radius of 40.00 feet for an arc distance of 192.95 feet, thence to a point curving to the left at a radius of 20.00 feet and an arc length of 16.82 feet, thence south $04^{\circ} 13'30''$ west a distance of 293.70 feet, thence to a point curving to the right at a radius of 25.00 feet and an arc length of 40.945 feet, thence north $89^{\circ} 37'00''$ west a distance of 90.205 feet to the place of beginning.

The Municipality of Monroeville hereby accepts for municipal purposes all of the storm water and sanitary sewers servicing the lots adjacent to the streets herein above described and located within the said street right-of-way or adjacent lots together with any easement and additional right-of-way therefore shown on said plan, to be part of the storm water sewer and sanitary sewer systems of the Municipality of Monroeville. The grades for the streets accepted hereunder are hereby established as the existing grades, reserving however the Municipality of Monroeville the right to change such grades without liability to adjacent property or property owners thereof.



MON. (FOUND)
2
MORACA
P.B.V. 93
PG. 105

1
N/W
ANTHONY GAMBLE ET. UX.

N/W
ARTHUR D. WRAY ET. UX.

N/W
JOHN P. CU
ET. U

N/W
BERNIE K. LEIPER
N/W
MATHEW
SBVB

EVERGREEN DRIVE 50'

Carrington Court
Street Acceptance
situate in
Municipality of Monroeville
Allegheny County, Pennsylvania

MONROE MAN
REV. 57 5

SIZE	DATE	DWG NO.	REV
	Nov. 8, 2000	SAVECADD\ROADS\CARRINGTON	
SCALE	N.T.S.	DRAWN BY Paul R. Hugus	