

MUNICIPALITY OF MONROEVILLE
ALLEGHENY COUNTY, PENNSYLVANIA

ORDINANCE NO. 1943

AN ORDINANCE OF THE MUNICIPALITY OF MONROEVILLE,
ALLEGHENY COUNTY, PENNSYLVANIA, VACATING A SEGMENT OF
LOCUST DRIVE IN THE ROSE CREST PLAN OF LOTS

BE IT ORDAINED AND ENACTED, by the Municipality of
Monroeville, in Council assembled as follows:

SECTION 1. That a segment of Locust Drive in the Rose
Crest Plan of Lots in vacated as below:

Beginning at a point, at the legal rights-of way of Locust
Drive and Willow Drive and the Northeast corner of property
N/F Robin J. McCollum, Block and Lot 640-K-123, thence North
62-20' West a distance of 118.80 feet to a point on the
property line, thence North 5-20'56" West a distance of
53.91 feet to a point, thence following a curve to the left
at a radius of 40.00 feet and an arc length of 45.54 feet to
a point, thence South 62-20' East a distance of 157.48 feet
to a corner property line, thence South 23-22'-40" West a
distance of 40.11 feet to the place of beginning.

SECTION 2. The ownership of the ground hereby vacated
shall revert to the property owners in accordance with law.

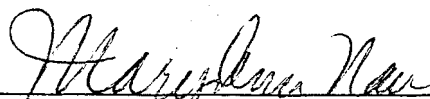
SECTION 3. The Ordinance shall become effective in
accordance with the provisions of the Monroeville Home Rule
Charter, Article IV.

SECTION 4. Any Ordinance or part of an Ordinance in
conflict with any of the provisions of this Ordinance is hereby
repealed to the extent of such conflict.

ORDAINED AND ENACTED this 9th day of May, 1995.

ATTEST:

MUNICIPALITY OF MONROEVILLE

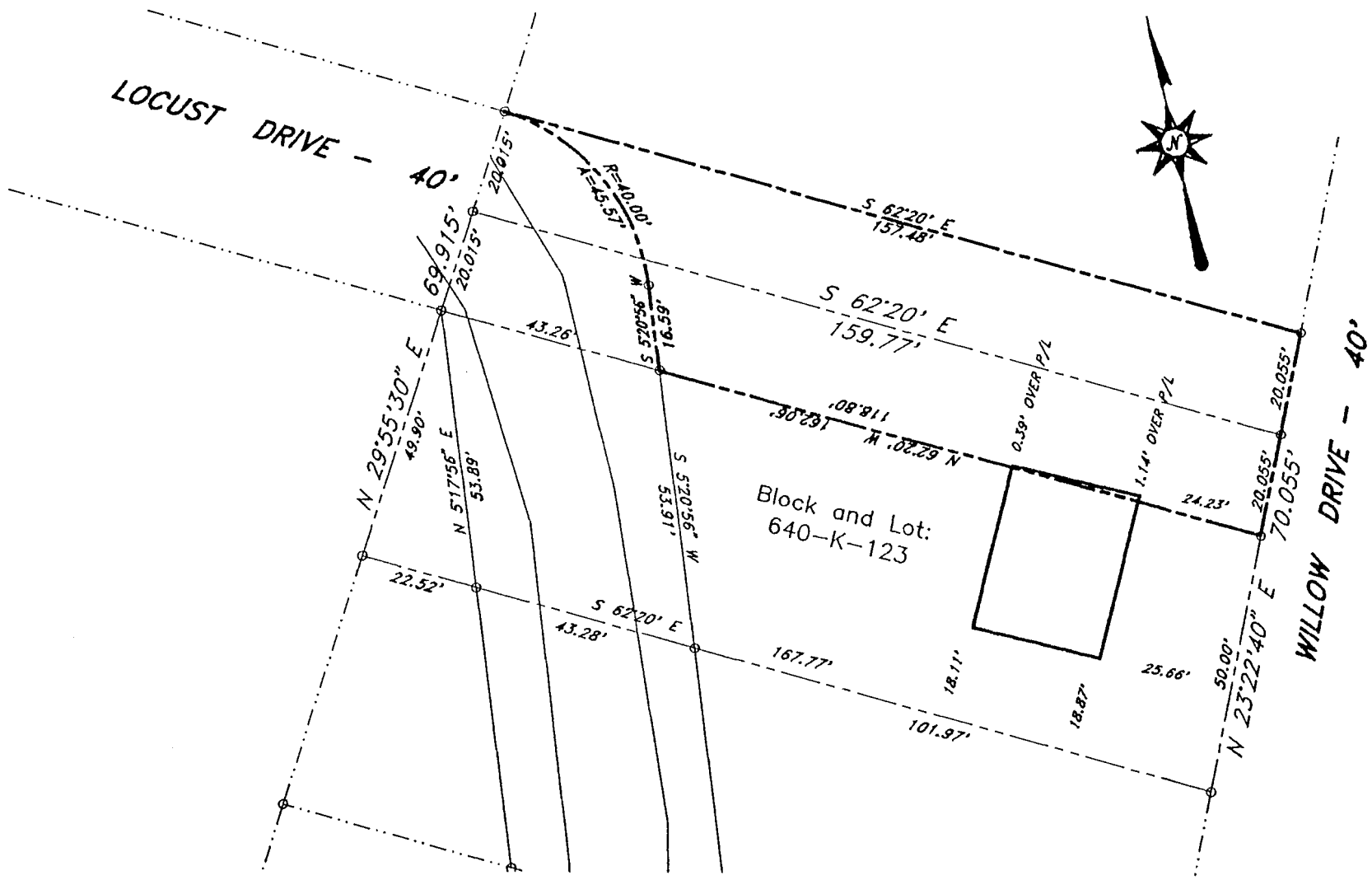


Mary Ann Nash
Municipal Manager



Thomas R. Schuerger
Mayor

ENTERED INTO LEGAL BOOK: May 19, 1995



Road Vacation

Locust Drive
situate in
Monroeville, Allegheny Co., PA

DATE May 3, 1995	DWG NO. o:\...\locust\vacation.dwg
SCALE 1"=30'	DRAWN BY F. Thomas Zeglin, P.E.

Exhibit "A"

LOCUST DRIVE
ROSE CREST PLAN OF LOTS

ROAD RIGHT-OF-WAY VACATION

LAND DESCRIPTION

FROM A POINT OF BEGINNING at the legal rights-of-way of Locust Drive and Willow Drive and the Northeast corner of property N/F Robin J. McCollum, Block and Lot 640-K-123, thence North $62^{\circ}-20'$ West a distance of 118.80 feet to a point on the property line, thence North $5^{\circ}-20'-56''$ West a distance of 16.59 feet to a point, thence following a curve to the left at a radius of 40.00 feet and an arc length of 45.57 feet to a point, thence South $62^{\circ}-20'$ East a distance of 157.48 feet to a corner property line, thence South $23^{\circ}-22'-40''$ West a distance of 40.11 feet to the place of beginning.