

MUNICIPALITY OF MONROEVILLE
ALLEGHENY COUNTY, PENNSYLVANIA

ORDINANCE NO. 1851

AN ORDINANCE OF THE MUNICIPALITY OF MONROEVILLE,
ALLEGHENY COUNTY, PENNSYLVANIA, VACATING AN ALLEY
BEING PART OF THE MELLON ROUTH PLAN

BE IT ORDAINED AND ENACTED, by the Municipality of Monroeville, in
Council assembled as follows:

SECTION 1. That an alley being part of the Mellon Routh Plan is
hereby vacated as follows:

BEGINNING at a point, said point being S 3 E a distance of 85.0
feet from a point along Third Avenue and S 87 E a distance of
120.0 feet from the east right-of-way line of Thomas Street being
the northwesterly corner of Lot 95; thence S 87 E a distance of
20.0 feet to a point along Lot 109; thence S 3 W a distance of
20.0 feet to a corner of Lot 109; thence S 87 E a distance of
269.29 feet to a corner of Lot 118; thence S 64 43' W a distance
of 42.09 feet to a corner of Lot 108; thence along Lots 108, 107,
106, 105 and 104 N 87 E a distance of 261.77 feet to a corner of
Lot 103; thence S 3 W a distance of 105 feet to a corner of Lot
103; thence N 87 W a distance of 20.0 feet to a corner of Lot
102; thence along Lots 102, 101, 100, 99 and 98, N 3 E 140.0 feet
to the place of beginning.

SECTION 2. The ownership of the ground hereby vacated shall revert
to the property owners in accordance with law.

SECTION 3. This Ordinance shall become effective in accordance with
the provisions of the Monroeville Home Rule Charter, Article IV.

SECTION 4. Any Ordinance or part of an Ordinance in conflict with
any of the provisions of this Ordinance is hereby repealed to the extent of
such conflict.

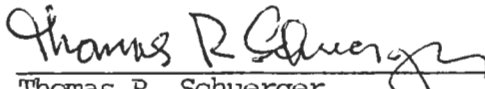
ORDAINED AND ENACTED this 14th day of September, 1993.

ATTEST:

MUNICIPALITY OF MONROEVILLE



Mary Ann Nau
Municipal Manager

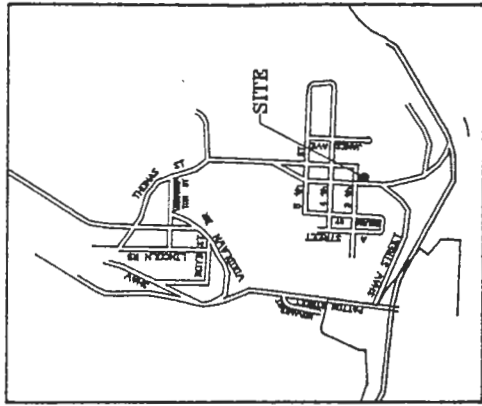


Thomas R. Schuerger
Mayor

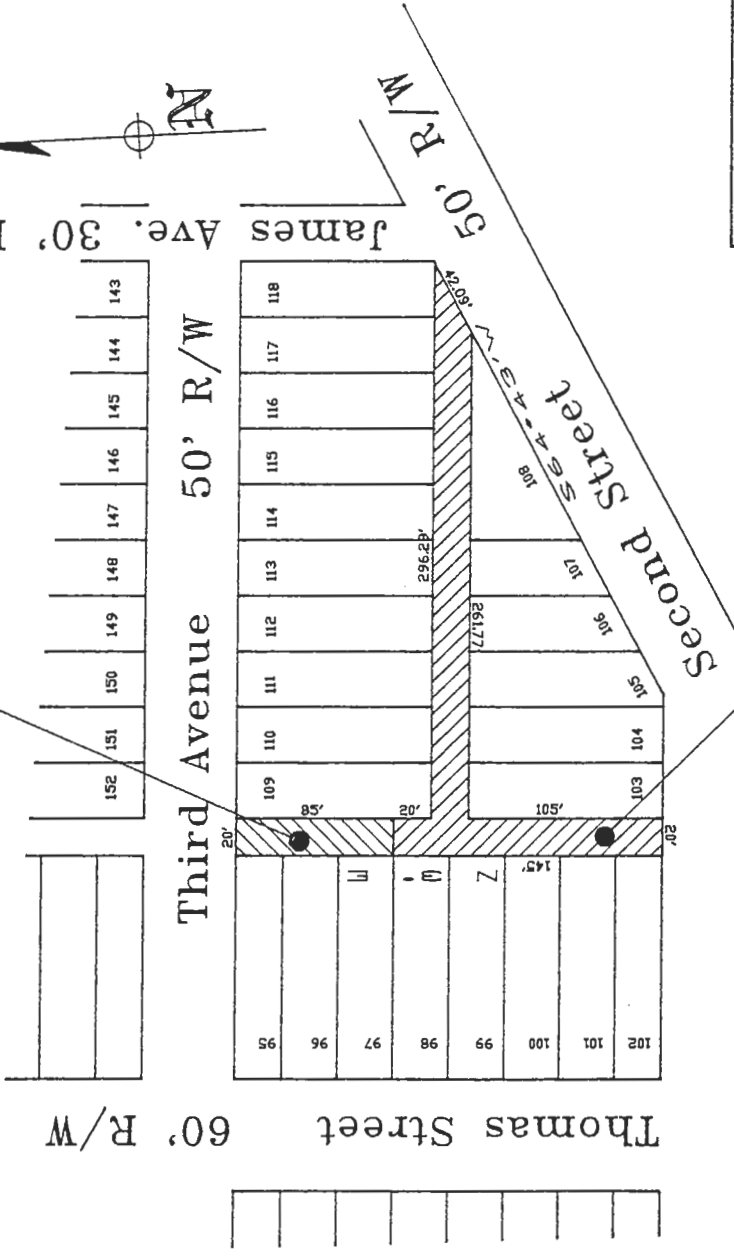
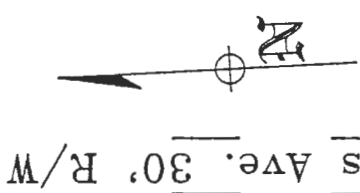
ENTERED INTO LEGAL BOOK ON:

Vacated - Ordinance No. 1413
April 11, 1984

Vacated - Ordinance No. _____
September 14, 1993



LOCATION MAP



Road Vacation		SIZE	FSCM NO.	DWG NO.	REV
Unnamed Alley		O:\MELLON.DWG			
SCALE 1"=100'			DRAWN BY F. Thomas Zeglin, P.E.		